

NEW & FEATURED PARTS

NEW PARTS

WILGER Dual Spray 4+1 [DS41] Nozzle Bodies



The ultra-compact 'DS41' nozzle body integrates a single by-pass nozzle body (optional for spot spray or Dual PWM) as well as a robust 4-nozzle turret.

This new generation of nozzle bodies is designed to fit compact boom frames, providing the benefit of stacked nozzle bodies in a much smaller and robust package with new product designs to improve fit and function.

'Left' Version
41900-00

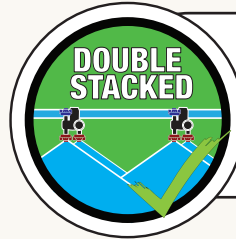
'Right' Version
41901-00



Spring-Lock Turret
Positive Turret Positioning

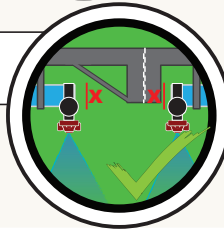


DOUBLE STACKED



Ability to spray with one or both nozzles independent of each other.

Super Compact
Space Saving

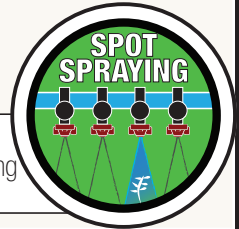


New Robust Design



Compact for 10" spot spraying spacing

SPOT SPRAYING



Chemical & Acid Resistant



COMBO-RATE® Boom End Flush Valves, QF100 Ultra Compact & Offset Elbows

A series of super compact fittings including the last spray nozzle body, full flush valve, and recirculation ports.

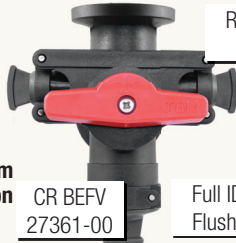


<1.5" Super Compact Boom Ends

Recirculating boom port



Engineered for Recirculating Spray Systems



2x Stackable COMBO-RATE nozzle body port



Ultra Compact nozzle body elbow



Compact Offset nozzle body elbow



Cuts out Boom Contamination

CR BEFV
27361-00

Full ID ORS
Flush Valve

COMBO-JET® DX SPOT SPRAY NOZZLES & 30° Nozzle Adapter

Narrow-angle drift reduction nozzles for spot spraying

Looking to fine-tune your spot spray look-ahead distance? Consider using the 30° adapter to tolerate faster speeds



DX60-04

PWM APPROVED



Available in

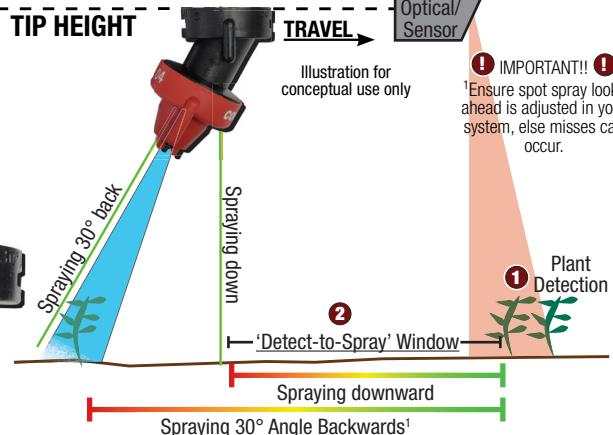
20°
40°
60°

Nozzle Angles

Available in DX sizes -015 to -125

NEW #40219-00
30° Adapter

For back or front, single nozzle spraying at 30°



NEW & FEATURED PARTS

COMBO-JET® 30/50 Adapter

Coming in Fall 2024



40442-00

COMBO-JET outlet to 30° & 50° front/back COMBO-JET outlets
-Quarter Turn-

Perfect for cereal-head fungicide & other applications benefiting from angled spray



Use it with the new DS41 nozzle body for angled spraying in tight sprayer boom frames

INSTA-JET insert for COMBO-JET®

Coming in Fall 2024



40262-00

The Insta-Jet insert snaps into any COMBO-JET¹ nozzle to speed up PWM nozzle start and stop

What is high-responsivity spraying?



The Insta-jet insert speeds up and extends the duration of optimal spray pattern by reducing the effective 'start' and 'stop' time required to produce a desired spray. This is especially important for spot spraying that has intermittent nozzle flow interruptions.

¹Not compatible with UR series or nozzles with long pre-orifice

30° Angled Nozzle Adapters

Nozzle adapters give the ability to angle a nozzle forward or backward, depending on needs for crop-adapted spraying. Commonly outfitted on spot spraying systems to increase potential spray speed.



Combo-Jet to Combo-Jet 30° Adapter 40219-00



Combo-Jet to Square Lug 30° Adapter 40220-00

COMBO-RATE Manifolds

Replacing a yard sprayer manifold? Building your own yard or ATV sprayer?



41115-03 (w/o barbs & gauge)

- For setups needing:
- Pres. Gauge
- Left/Right Wing(s)
- Spray Gun
- Pressure regulator valve
- Easily Expandable

Combo-Rate® pre-built 3-Outlet Control Manifold

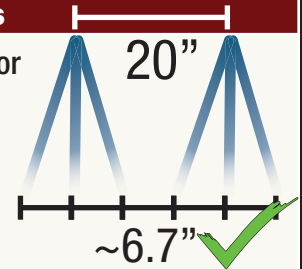
NEW 3-Hole Fertilizer Streamer (FS3) Nozzles

Precision molded & color-coded liquid fertilizer streamer caps for consistent liquid fertilizer with less plant burn.

Includes metering orifice and deflector plate in a single part number for easy ordering.



Improved performance at higher pressures



Available in sizes from 0.15 us gpm - 2.0 us gpm

Use Tip Wizard for Fertilizer Streaming Nozzle Selection



Simply input your intended application rate(s), speed, nozzle spacing and you are well on your way to finding the best fertilizer streamer nozzle for your spray applications.

USE IT FREE AT WWW.WILGER.NET

Download on the **App Store**

GET IT ON **Google Play**

NEW & FEATURED PARTS

NEW PARTS

Wilger Electronic Flow Monitoring System ECU200 Release

A new compact ECU that includes the first 16CH node for more compact systems
ECU200 Series Kit (#20606-00) includes:



#20606-01 ECU ONLY

Back View: New position for ECU Serial Number
 (! 9 digit serials now used)

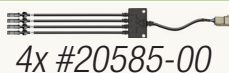


#20606-02
 Connects 'Node 1' quad-sensor harnesses A / B / C / D

Connects the battery harness to the ECU



#20606-03



4x #20585-00

12v battery harness #20603-02

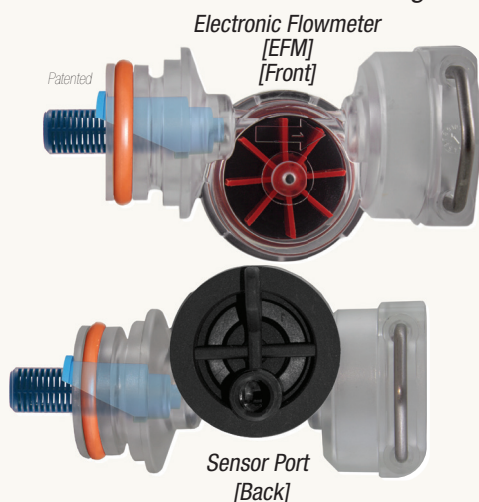


Antenna #20603-03

What about other EFM parts?
 All parts beyond this kit are shared between ECU100 and ECU200 parts.

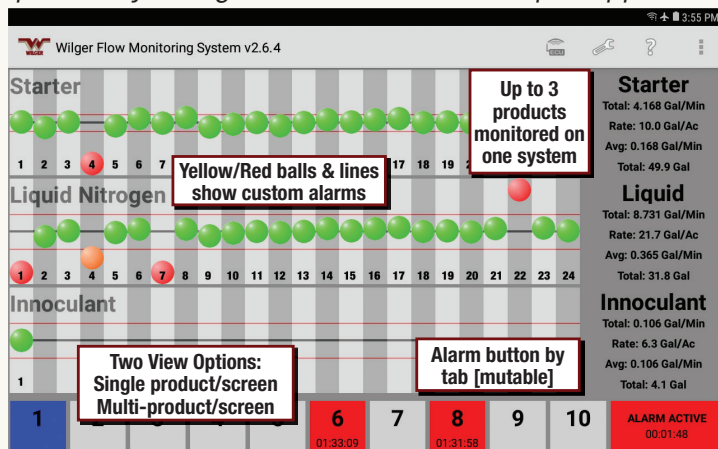
Wilger Electronic Row-By-Row Flow Monitoring System

The serviceable flowmeter designed & built specifically for agricultural chemical & liquid applications



Electronic Flowmeter [EFM] [Front]

Sensor Port [Back]



Two View Options:
 Single product/screen
 Multi-product/screen

Alarm button by tab [mutable]



Fittings Swivel 360°



Modular Design for Any Size Equipment

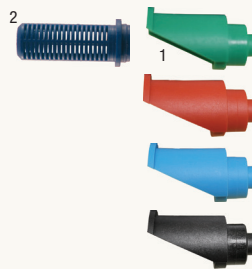


Serviceable Flowmeter for Ag.



High Accuracy Flowmeter

IMPROVED EFM-JET DESIGN
¹Easier removal & insertion shipping in 2024



²EFM kits are supplied with 1x 50-mesh strainer to be used if necessary

Wilger Product Literature & Tools



Wilger provides free printed product literature, prices lists and tools. Request a copy today. All brochures are also available at www.wilger.net

FREE Tip Wizard Updates



Tip Wizard has new features! ORS metering orifice calculator, Flow Indicator Ball Selector, and further improved Tip Wizard spray tip search.

Tip Wizard aims to lead the industry as the best spray tip calculator for broadcast applications.

WHERE TO BUY WILGER PRODUCT

To find a list of local dealers/retailers and distributors in your area, visit the WILGER.net 'WHERE TO BUY' page, to easily enter your address to find local Wilger product.